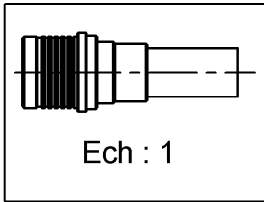
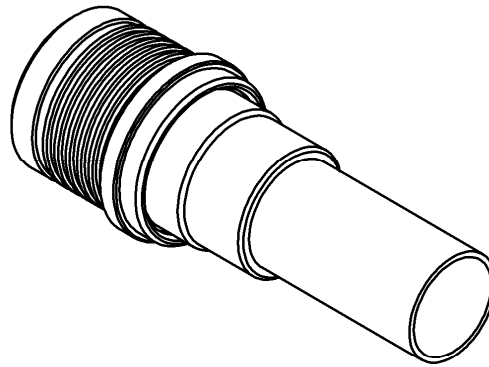
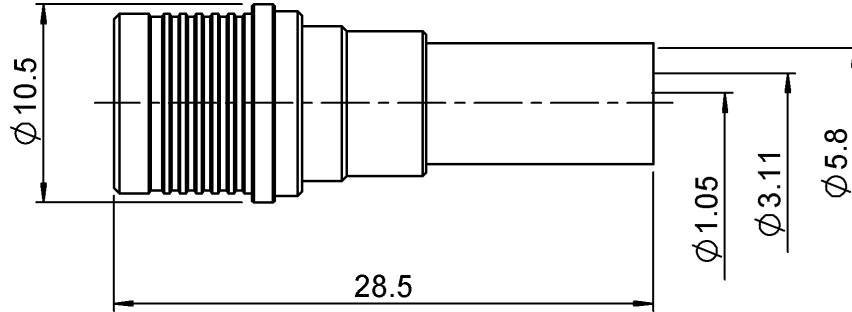


**STRAIGHT PLUG FULL CRIMP**

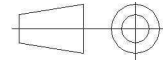
**R123.076.000**

**CABLE 5/50 D**

Series : QMA



All dimensions are in mm.



| COMPONENTS     | MATERIALS | PLATINGS ( $\mu\text{m}$ ) |
|----------------|-----------|----------------------------|
| BODY           | BRASS     | BBR 2                      |
| CENTER CONTACT | BRASS     | NPGR                       |
| OUTER CONTACT  | BRASS     | BBR 2                      |
| INSULATOR      | PTFE      |                            |
| GASKET         | -         |                            |
| OTHERS PARTS   | BRASS     | BBR 2                      |
| -              | -         | -                          |
| -              | -         | -                          |

Issue :0923 F

In the effort to improve our products, we reserve the right to make changes judged to be necessary.



**RADIALL**®

**STRAIGHT PLUG FULL CRIMP**

**R123.076.000**

**CABLE 5/50 D**

Series : QMA

**PACKAGING**

| Standard   | Unit              | Other             |
|------------|-------------------|-------------------|
| <b>100</b> | <b>'W' option</b> | <b>Contact us</b> |

**SPECIFICATION**

**CABLE ASSEMBLY**

| Stripping | a    | b    | c    | d    | e    | f    |
|-----------|------|------|------|------|------|------|
| mm        | 3,00 | 6,30 | 10,8 | 0,00 | 7,80 | 0,00 |

**ELECTRICAL CHARACTERISTICS**

Assembly instruction : **Crimp 02**

Recommended cable(s)  
 RG 142  
 RG 142 FTX  
 KX 23  
 RG 400  
 RG 223

Characteristics indicated on this data sheet are those that can be achieved with the highest performance cable. Intrinsic limitations of the cable may diminish the performance of the assembly

Cable retention

- pull off **200 N mini**  
 - torque **NA N.cm**

**MECHANICAL CHARACTERISTICS**

**TOOLING**

| Part Number  | Description                     | Hexagon          |
|--------------|---------------------------------|------------------|
| .            | .                               | .                |
| R282.223.000 | CRIMPING TOOL                   | 5.41             |
| R282.235.011 | CRIMPING DIES<br>M22520/5-11    | 5.41             |
| R282.281.000 | CRIMPING TOOL                   | 2x4 (pos.7<br>)  |
| R282.293.000 | CRIMPING TOOL<br>M22520/5-01    |                  |
| R282.967.015 | POSITIONER FOR<br>CRIMPING TOOL |                  |
| R299.511.016 | STRIPPING<br>CASSETTE .059/.248 | denudage<br>B, E |

**OTHERS CHARACTERISTICS**

VSWR : 1.12 max from 0 to 3GHz  
 Intermod.: -120 dBc at 1.8GHz (2x20W)  
 RF leakage(interf.): 3<F<6GHz: >70dB

Impedance **50 Ω**  
 Frequency **0-6 GHz**  
 VSWR + **0,0000** x F(GHz) Maxi  
 Insertion loss **.05** √F(GHz) dB Maxi  
 RF leakage - ( **80** - F(GHz)) dB Maxi  
 Voltage rating **335** Veff Maxi  
 Dielectric withstanding voltage **1000** Veff mini  
 Insulation resistance **5000** MΩ mini

Center contact retention  
 Axial force – Mating end **18 N mini**  
 Axial force – Opposite end **18 N mini**  
 Torque **NA N.cm mini**

Recommended torque  
 Mating **NA N.cm**  
 Panel nut **NA N.cm**  
 Clamp nut **NA N.cm**  
 A/F clamp nut **0,0000 mm**

Mating life **100 Cycles mini**  
 Weight **6,3110 g**

**ENVIRONMENTAL**

Operating temperature **-40/+105 °C**  
 Hermetic seal **NA Atm.cm3/s**  
 Panel leakage **NA**

Issue :0923 F

In the effort to improve our products, we reserve the right to make changes judged to be necessary.

